



عدل العقارية  
ADEL REAL ESTATE



نُزهر الأرض  
Blooming Earth



# Index

/// About Adel  
04

/// Projects  
11

/// Management Team  
26

/// Initiatives  
28

/// Success Partners  
35

# About Adel



## Our Story

Adel Real Estate emerged from Eastern Province, fueled by lofty ambitions to lead the way in real estate development. We are dedicated to crafting integrated communities that inspire and rise to aspirations, providing all the essentials for a quality life that aligns with the Kingdom's Vision 2030.

We aim to stand as a beacon of innovation through our deep understanding of community needs, building properties that resonate with ways of living.

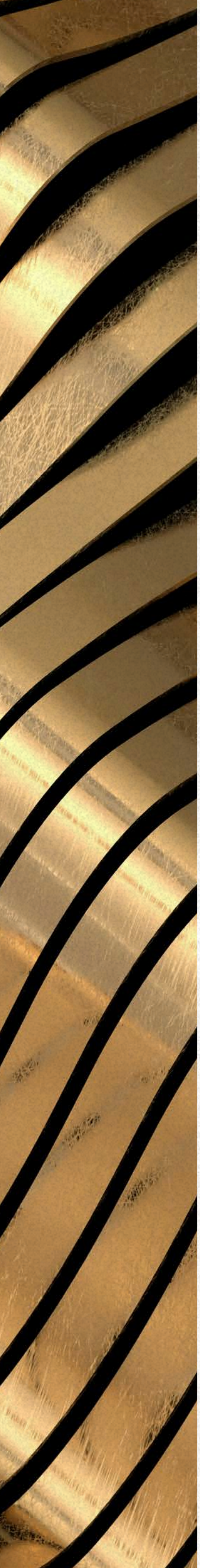




# Our Vision

To be the leading company in real estate development, actively contributing to achieving the goals of Vision 2030 and meeting customer aspirations.





 **Our Values**

**Integrity**

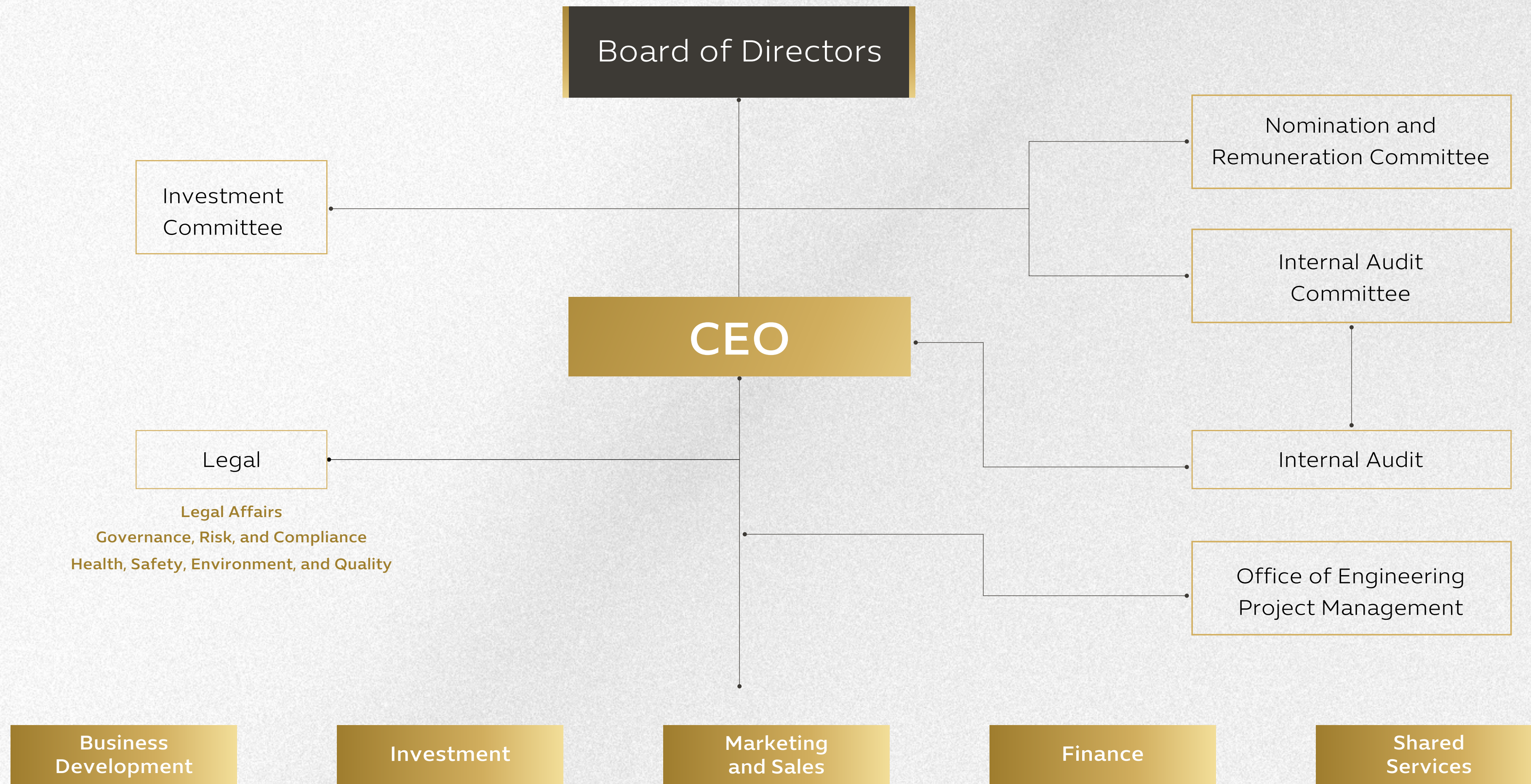
**Sustainability**

**Client Satisfaction**

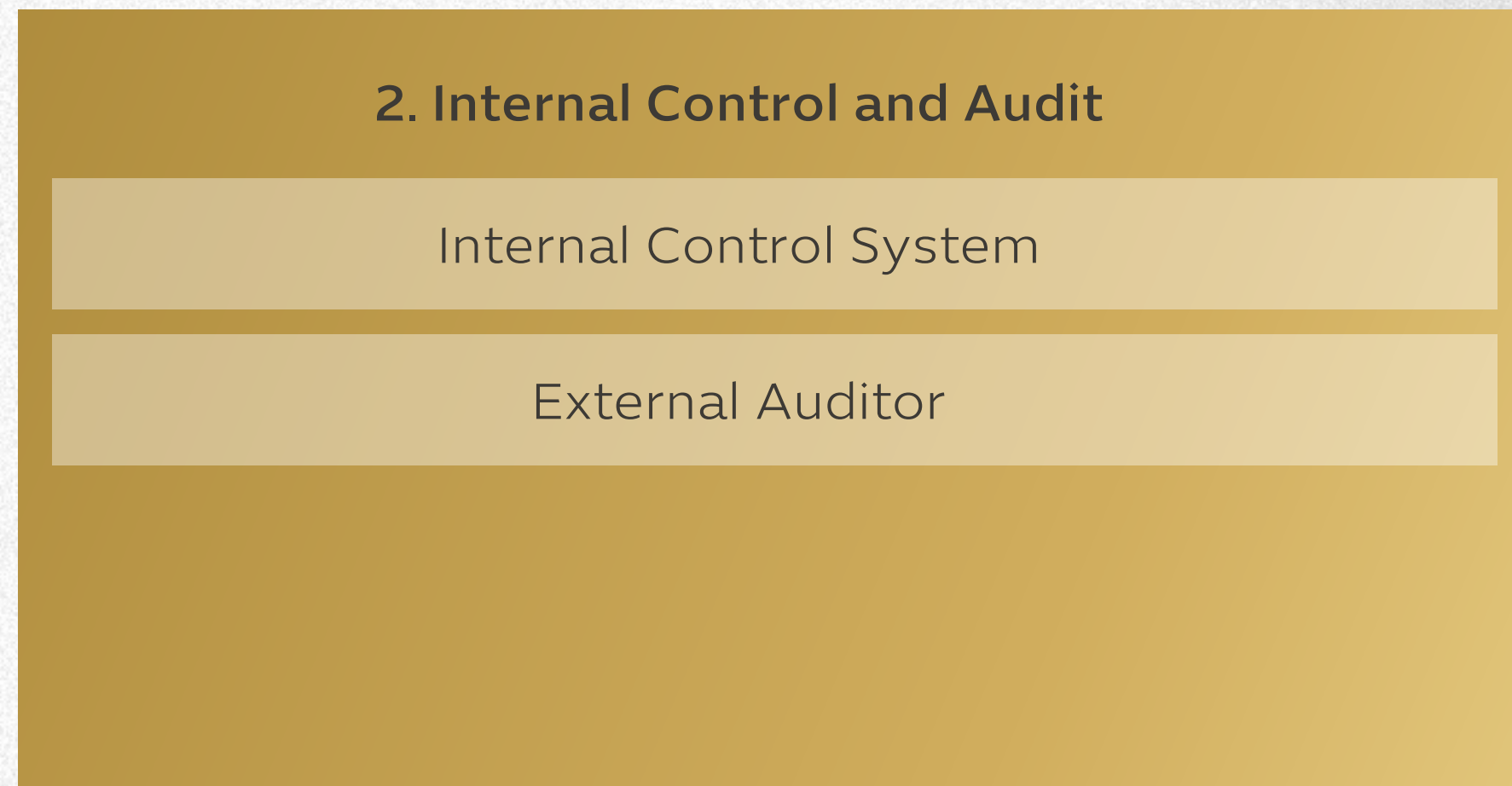
**Strategic Foresight**



# Structure



# Adel Governance



# Business Methodology

Main Activities						
Exit	Management	Execution	Qualification		Identification	
Exit from investment	Investment Management	Investment Execution	Approval	Due Diligence	Feasibility Study and Analysis	Investment Identification
Implementing Strategies to Increase Asset Value	Project/Investment Management	Deal Structuring	Committee Review	Financial and Operational Due Diligence	Preliminary Feasibility Study	Strategy Identification
Implementing Exit Strategies	Asset Performance Monitoring	Negotiating Terms	Decision Making	Ensuring Legal Compliance	Strategic Alignment Analysis	Market Analysis and Opportunity Identification across Different Asset Classes
	Portfolio Rebalancing	Securing Funding	Defining Budget, Timeline, and Key Performance Indicators (KPIs) for Investment	Risk Assessment	Financial Modeling	Identifying Potential Partnerships
		Finalizing Agreements with Ensured Legal and Financial Compliance			Alignment with Stakeholders	

We aspire to charm the real estate landscape with our environmentally conscious practices, inspiring a future of sustainability and innovation.



# Our Projects



## Adel's Projects

Our projects are designed with a community-oriented approach, prioritizing the needs of residents while embodying strategic foresight. We focus on creating integrated spaces where all services and amenities coexist seamlessly, supported by modern and intelligent infrastructure.

We offer a vibrant vision for the future, combining thorough planning that addresses client needs with a global perspective.



Total Land Area

**12 Million m<sup>2</sup>**

Total Project Value

**10 Billion SAR**


Total developed plots

**9450**

Housing Over

**100,000**

People



**ADEL  
DISTRICT**  
حي العدل

Adel District is a thoughtfully designed land development that encompasses residential, commercial, and service areas. At its heart lies Adel Park, a lively green space designed for sports and leisure, complete with charming cafes.

Adel District embodies all the elements of quality living, with careful planning. Strategically located near Dammam's key destinations.

Total Land Area

**5,671,294 m<sup>2</sup>**

Project Status

**Fully Developed**

Number of Plots

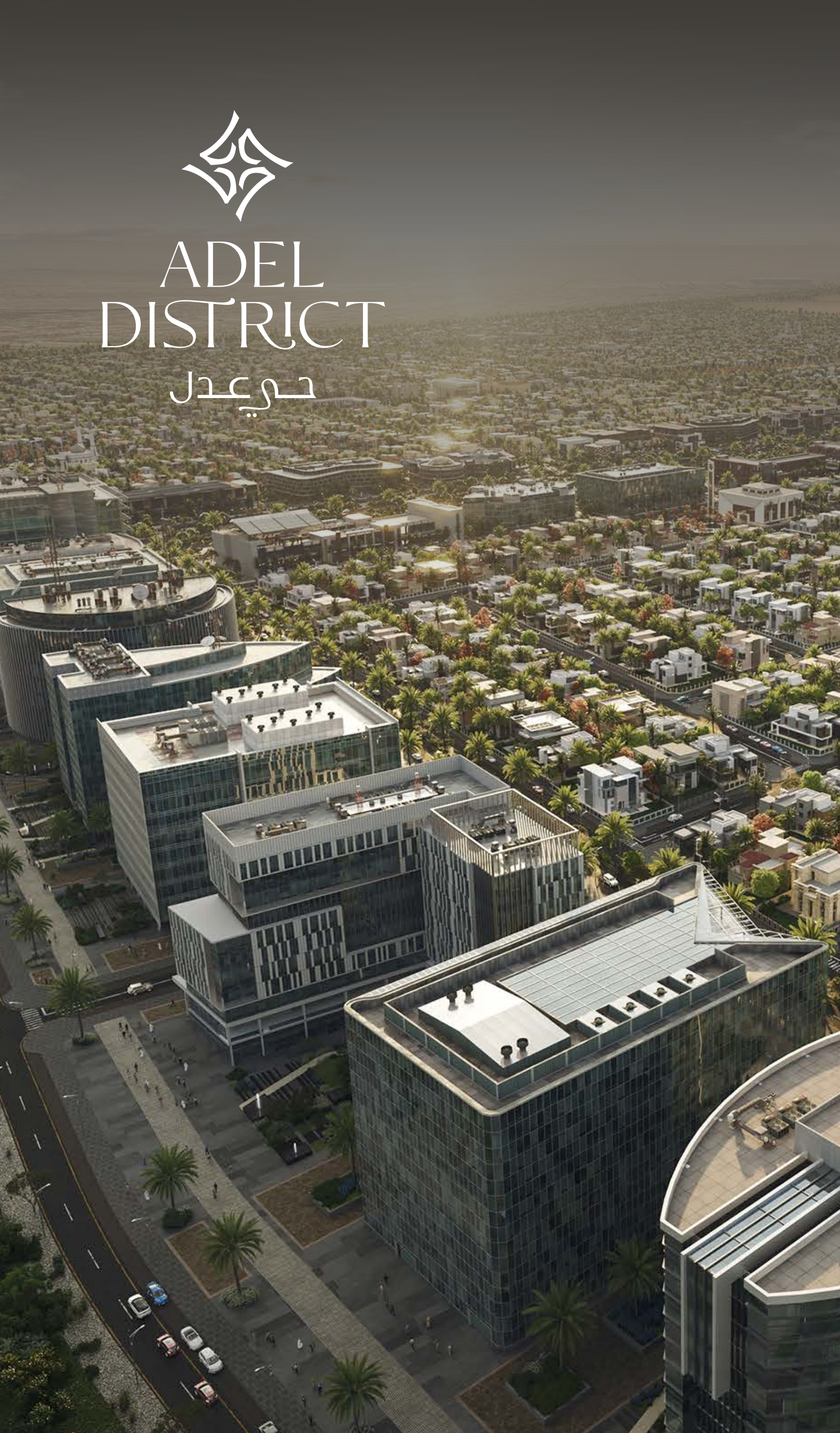
**4930**

Project Value

**4.8 Billion**








ADEL  
DISTRICT  
حي عدل



  
ADEL  
DISTRICT  
حي عدل

3.675,9 م<sup>2</sup>  
في المساحة

2468  
أعمدة البتارة

km  
117  
طول كابلات  
البتارة

Lm  
17,397  
طول التاريب  
الصرف الصحي

Lm  
107,640  
أطوال التبريق

13K  
شجرة



AEDEL  
DISTRICT  
حي عدل



Our projects are designed with a community-oriented approach, prioritizing the needs of residents while embodying strategic foresight. We focus on creating integrated spaces where all services and amenities coexist seamlessly, supported by modern and intelligent infrastructure.

We offer a vibrant vision for the future, combining thorough planning that addresses client needs with a global perspective.

Total Land Area

4,548,705 m<sup>2</sup>

Project Status

Fully Developed

Number of Plots

3560


Project Value

3.2 Billion



أخيل  
AKHIAL





Al Deerah offers a unique blend of residential and commercial spaces, all surrounded by essential health, educational, and retail services, creating an ideal setting for an enriched lifestyle.

Located in Dammam where every story unfolds against a backdrop of the stunning coastal landscape.

Total Land Area

**760,508 m<sup>2</sup>**

Project Status

**Fully Developed**

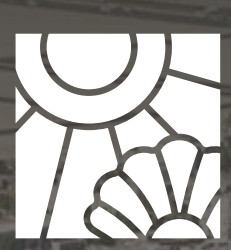
Number of Plots

**521**

Project Value

**900 Million**





الديرة  
ALDEERA  
WATERFRONT







# ADEL BAY

خليج عدل

A vibrant community development that spans over 500,002 square meters, Adjacent to Al Deerah, Adel Bay captures the essence of modernity and vibrancy, offering a lively atmosphere that appeals to all.

With its prime waterfront location, this exceptional project invites residents to immerse themselves in an unforgettable lifestyle experience.

Total Land Area

500,002 m<sup>2</sup>

Project Status

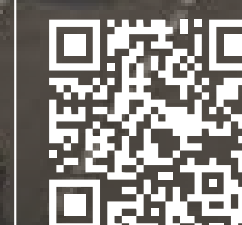
Under Development

Number of Plots

466

Project Value

740 Million



# ADEL BAY

خليج عدل



# Our Management Team



## Management Team



**Ibrahim Al-Nemer**  
Chairman



**Bandar Al-Shehri**  
Chief Executive Officer (CEO)



**Fouzy Al-Marzooq**  
Chief Investment Officer (CIO)



**Sajjad Haider Sayed**  
Chief Financial Officer (CFO)

# Initiatives



## Adel Initiatives

### Building Connections and Enriching Communities

Our commitment to vibrant living led to the development of a 3-kilometer service road along King Fahd Road, easing traffic and enhancing travel efficiency. Alongside this, we created two parks covering 72,000 square meters and a stunning 140,000-square-meter waterfront in Plot 1316, offering recreational opportunities and showcasing the region's natural charm while promoting sustainable urban growth. These projects showcase the region's natural beauty while offering diverse recreational amenities for families and visitors, contributing to an enriched lifestyle and sustainable urban development.





## Dammam Waterfront

Introducing the Dammam Waterfront, the Eastern Province's newest and most vibrant seaside destination. Covering 140,000 square meters, it offers lush green spaces, scenic trails, cycling paths, and serene waterfront views. Perfect for families, athletes, and relaxation seekers, the park is more than a recreational area—it's a community hub where nature and activity come together in harmony.



### Key Elements

- Restaurants and Cafes
- Outdoor Jungle Gym
- Ample Parking
- Green Walkways and Pavements
- Seaside and Beach Walkways
- Cycling Routes
- Events Area
- Kid's Playground
- Shaded Outdoor Seating



## Adel Park 1

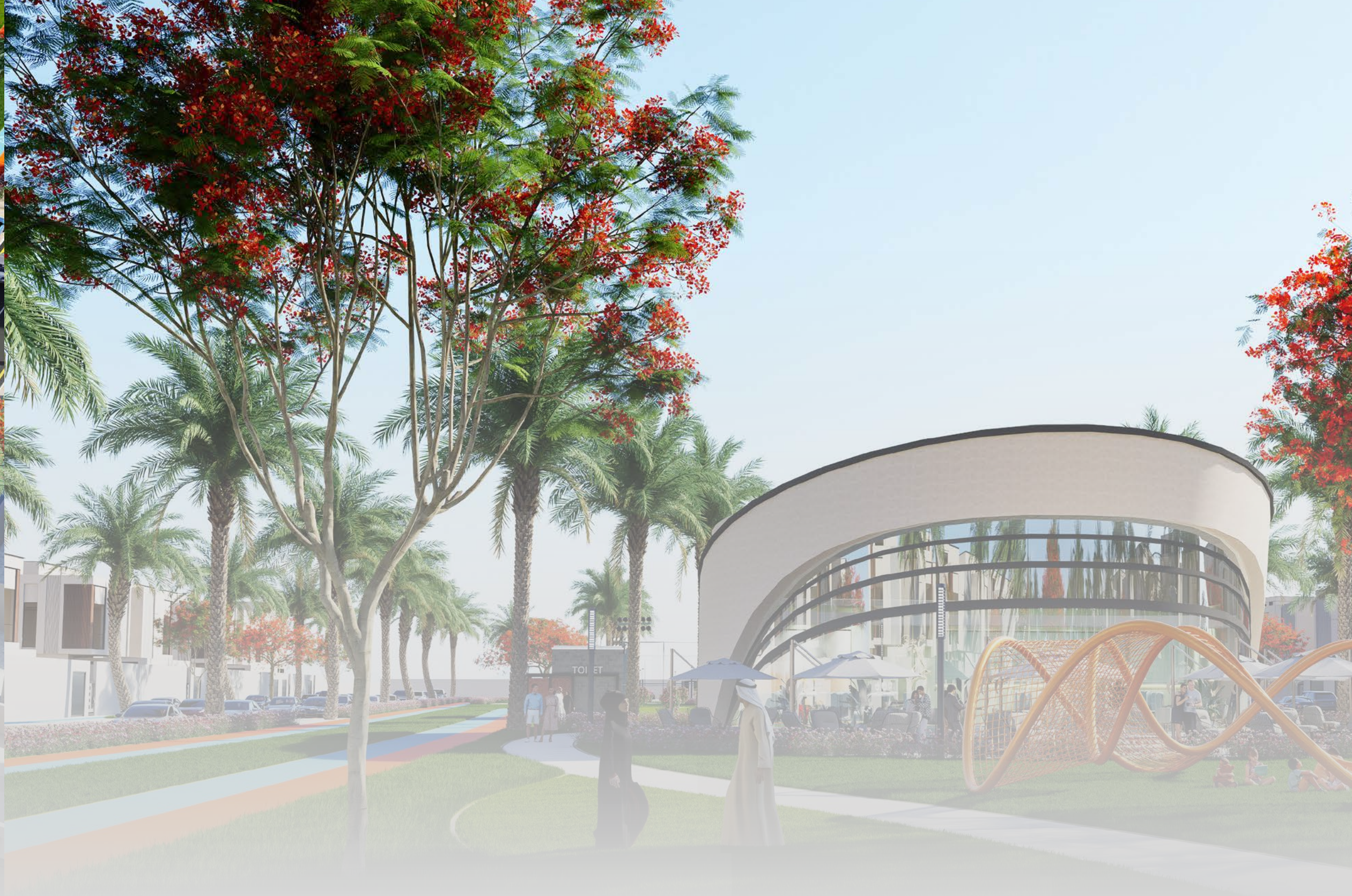
Located in the heart of Adel District, Adel Park 1 spans 70,000 square meters, offering a vibrant retreat that combines recreation, sports, and relaxation in a stunning setting. With amenities ranging from sports facilities and playgrounds to tranquil green spaces, the park is thoughtfully designed to cater to families, athletes, and nature enthusiasts. More than just a recreational space, it is a community destination where nature and connection flourish.

### Key Elements

- ✓ Dining Areas
- ✓ Tennis Courts
- ✓ Football Court
- ✓ Outdoor Fitness

- ✓ Cycling Paths
- ✓ Scenic Walkways
- ✓ Shaded Areas
- ✓ Event Space





## Adel Park 2

Adel Park 2, located within the vibrant Adel District, is a beautifully crafted recreational haven that offers something for everyone. With its lush green spaces, shaded seating areas, and a wide array of leisure and sports facilities, the park serves as a central community hub where people of all ages come together. Families can enjoy quality time, sports enthusiasts can stay active, and nature lovers can find tranquility amidst the park's scenic beauty. More than just a park, it's a place where connections are built, memories are made, and the outdoors is celebrated in all its charm.

### Key Elements

- Football Court
- Lush Green Spaces
- Shaded Seating Areas
- Scenic Walkways
- Cycling Trails
- Dining and Refreshments zones
- Kids' Playgrounds
- Tennis Courts
- Pond with Water Features



## Highway 60 Development

Adel Real Estate continues to enhance infrastructure and connectivity with two impactful projects. The Highway 60 upgrade, a gift to the municipality, improves traffic efficiency, safety, and access while introducing sustainable pathways for pedestrians and cyclists. Additionally, the King Saud Road extension connects the King Fahd Road suburb to the Akhail project, reinforcing the main road network, improving access to Riyadh, and supporting new developments. This initiative embodies Adel Real Estate's commitment to developing integrated, connected communities.

- Key Elements
- Strategic Connectivity
- Enhanced Accessibility
- Community-Centric Design
- Urban Development Boost
- Future-Ready Infrastructure

## Success Partners



وزارة البلديات والإسكان  
Ministry of Municipalities and Housing



# Contact

+966 920002548

+966 530489900

info@adelrealestate.com

✕ @ ▶ f adel\_realty

5299 Shati Sharqi, 8483 Al Khaleej Road

32414 Dammam, Saudi Arabia

